



Handle Gear Plunger Kit

Models: T1, E5, R3, Speed Scrub 15", Speed Ex, Strive Compact



This kit includes the part needed to rework a defective handle plunger.

INSTALLATION INSTRUCTIONS:

Installation Time: 1 Hour

Tools Required: Needle Nose Pliers, 13mm Socket Wrench, Masking tape, Utility Knife, 6mm Allen Wrench, T-25 Torque Screwdriver, All Purpose Grease, 12"-14" piece of 2" PVC Pipe.

FOR SAFETY: Before installing kit, turn off machine, unplug power cord and empty solution tanks.

DISASSEMBLE HANDLE:

1. Remove the cover from the machine by removing two E-clips and pins (Figure 1). Set cover aside.

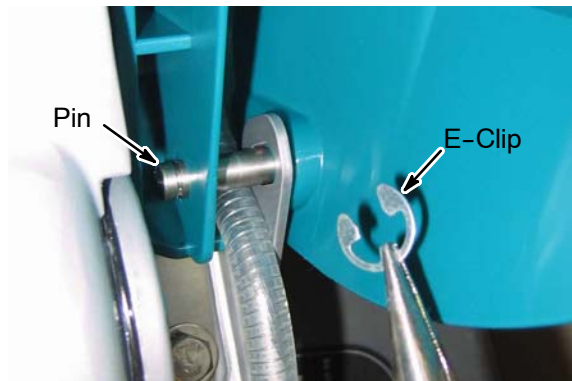


Fig. 1

2. Mark the position of the handle bracket with a piece of masking tape and cut the tape as shown (Figure 2). The mark is required to properly position the bracket when re-assembling handle.

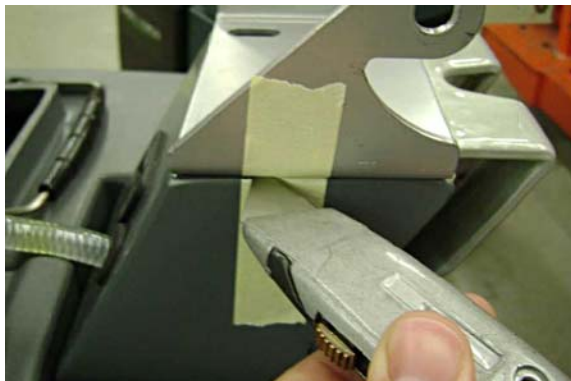


Fig. 2

3. Remove the 4 bolts that secure the handle pivot brackets to the machine (Figure 3).

Kit Contents		
Part No.	Description	Qty.
1034873	Plunger, Notched Pin	1
9006058	Instructions, Installation	1

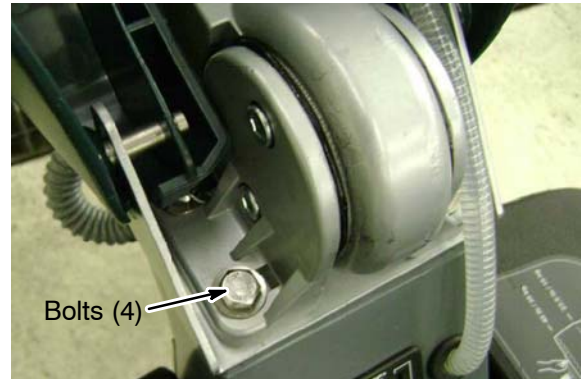


Fig. 3

4. Remove one of the two handle pivot brackets, two Allen head screws hold it place. Remove bracket to access gear (Figure 4). Carefully remove O-ring from bracket and set aside.

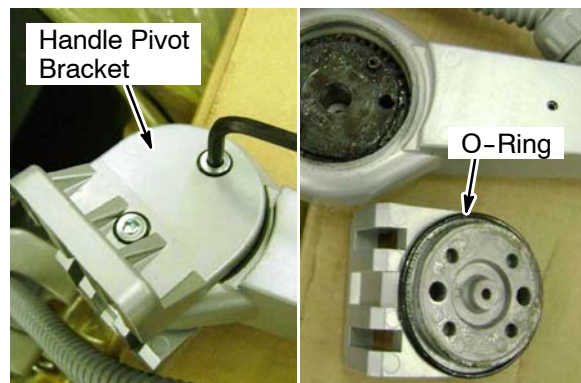


Fig. 4

5. Pull the handle adjustment lever and push the face of the gear to remove gear from handle assembly (Figure 5). Remove second O-ring from the other handle pivot bracket and set aside.

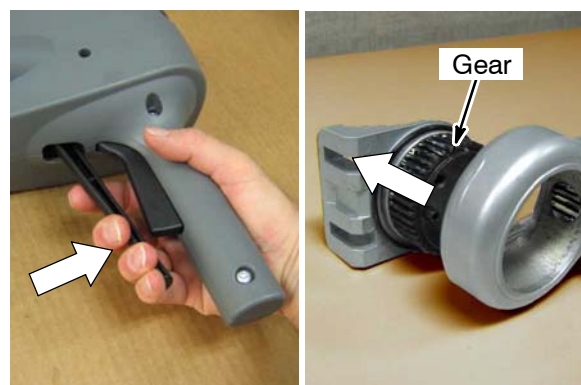


Fig. 5

Handle Gear Plunger Kit INSTALLATION INSTRUCTIONS - Continued

- Separate the two handle grip halves by removing 8 screws (Figure 6).
NOTE: The screw near the handle column may be tight, remove slowly to prevent screw damage.

Do not disconnect any of the wiring.

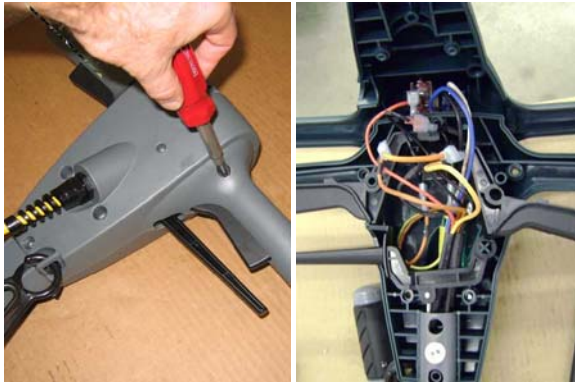


Fig. 6

- Press the spring loaded plunger inward and remove the handle adjustment lever from the rod (Figure 7).

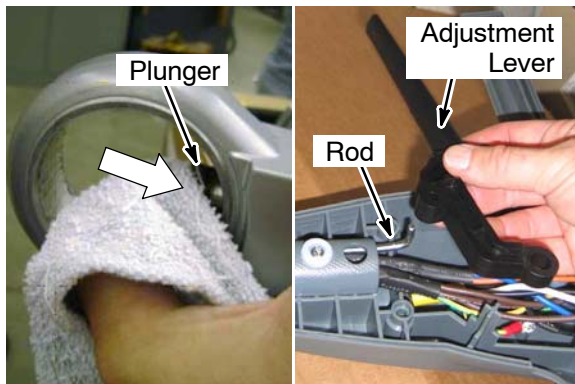


Fig. 7

- Insert a piece of 2 inch PVC pipe, 12-14 inches in length, into the gear opening to hold the plunger inward. Turn the rod counter-clockwise several rotations until rod unthreads from gear plunger (Figure 8). **NOTE:** Use the PVC pipe as a lever to push plunger further inward.

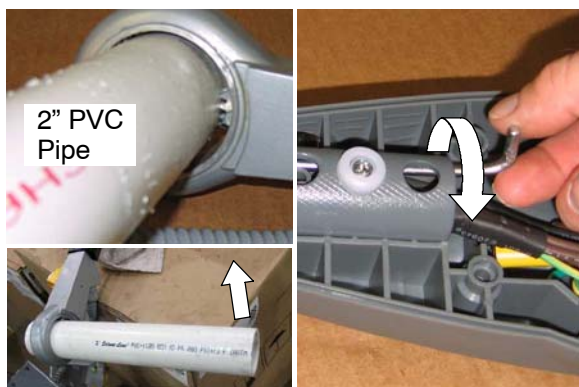


Fig. 8

- Remove the gear plunger w/spring from the handle (Figure 9). Discard the plunger and set the spring aside for reuse.

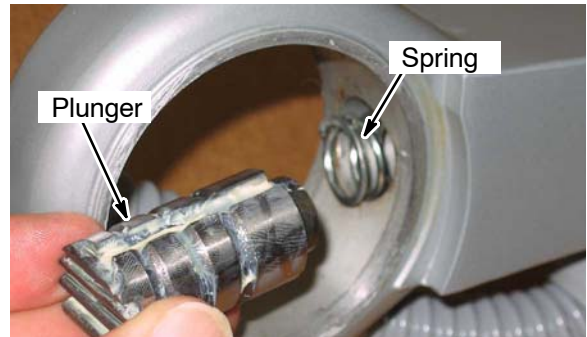


Fig. 9

INSTALL NEW GEAR PLUNGER:

- Position the rod elbow as shown and push the rod inside the tube until the threaded end protrudes out the opposite end (Figure 10).

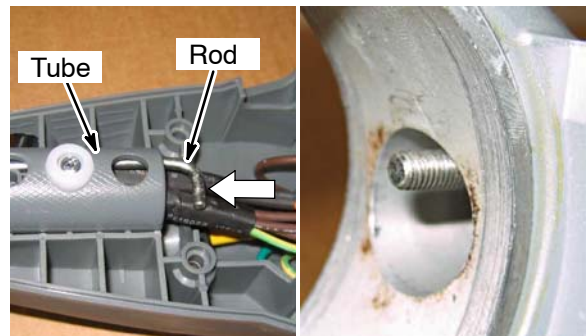


Fig. 10

- Insert the spring into the handle with the larger end of the spring facing towards you. To determine which spring end is larger, the larger end will fit on the plunger as shown. (Figure 11a)

Using a small screwdriver, push the spring inward until the large end of the spring is positioned behind the pin (Figure 11b). This will compress the spring for easy plunger installation.

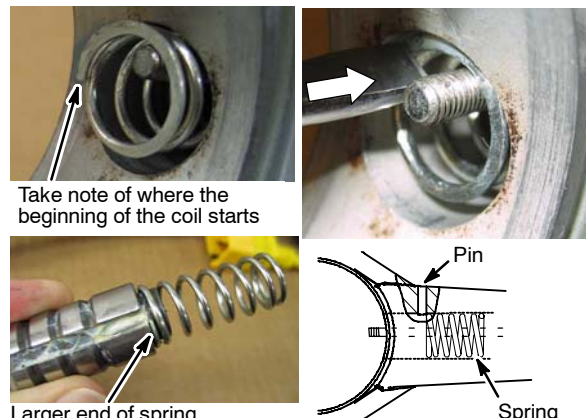


Fig. 11a

Fig. 11b

Handle Gear Plunger Kit INSTALLATION INSTRUCTIONS - Continued

3. Thread the new plunger onto the rod then grease the plunger (Figure 12).

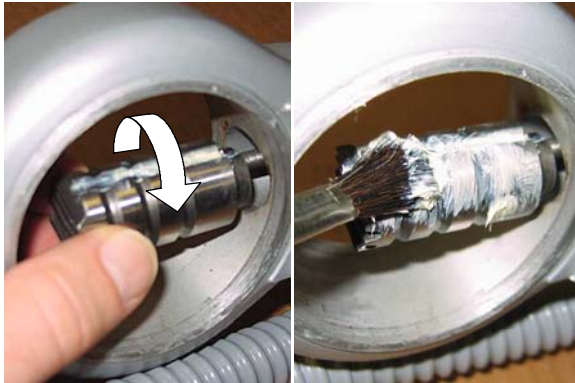


Fig. 12

4. Align the slot on the plunger with the pin and press the plunger into the hole until it engages the spring (Figure 13).

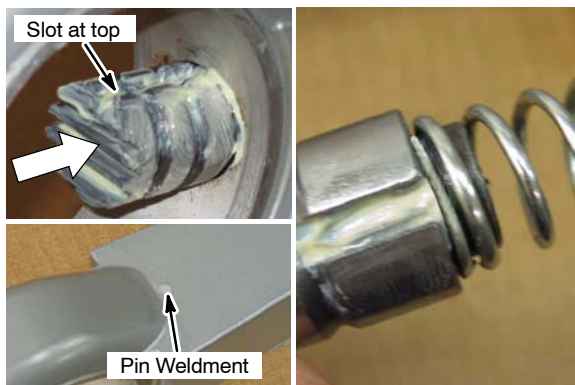


Fig. 13

5. Using a piece of 2 inch PVC pipe, depress the plunger completely into the hole and turn the rod clockwise until properly threaded (Figure 14).

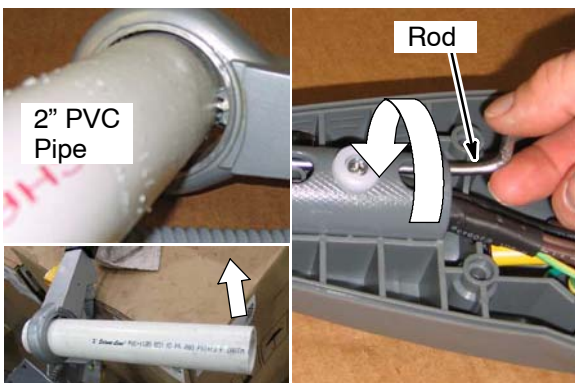


Fig. 14

To test the plunger for proper adjustment, install the handle adjustment lever. When the lever is pulled, the gear plunger should be slightly below the surface of the gear housing (Figure 15). Readjust rod if necessary.

NOTE: If the lever has restricted movement (too tight), the plunger may not be completely engaged with the spring.

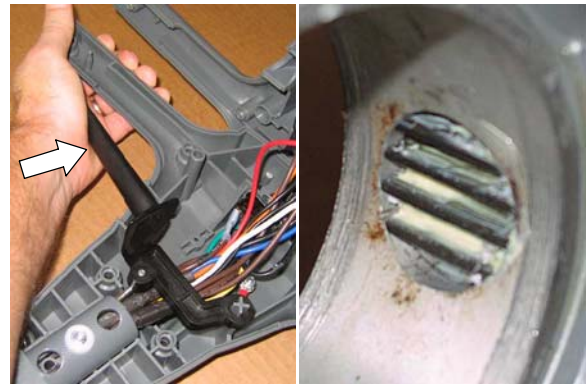


Fig. 15

6. After plunger is properly adjusted, re-assemble the handle by repeating steps 1-6 in reverse on pages 1-2.

NOTE: When re-assembling the handle grip halves, make sure the wiring does not hinder the handle adjustment lever or trigger operation. Also make sure that the wires are not pinched by the two halves.

HINT: For easy O-ring installation, re-install the O-rings after installing the handle pivot brackets as shown (Figure 16).

NOTE: When reconnecting the cover, make sure the solution hose is positioned as shown (Figure 17).

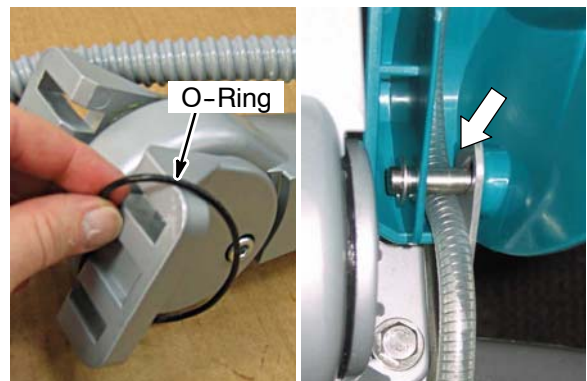


Fig. 16

Fig. 17